

Model # **YT15-RRC-01**

- Features**
- 162 authorizations
 - Proxy authorizations
 - Multi-key A&B
 - Checkpoint

General Description

37mm rim cylinder lock
 Body Material: Brass
 Finish: SNP(Satin Nickel Plated)
 Minimum Door Thickness: 27mm
 Maximum Door Thickness: 70mm



Warranty 1 year

Security

Base authorizations	162	
Key strength	64	bits
Supported protocols	SG1	
Feature class	B	(commercial)

Mechanical

Maximum dimensions	37.3 x 41.6	mm
Centre Bore Offset	6	mm
Barrel diameter	30	mm
Retaining screws separation	20.4	mm
Rose diameter	41.6	mm

Operating life

Actuation probability	>99.0	%
Key insertions	100,000	

Multi-key limitations

Min period	8	seconds
Max period	3	days
Max keys in operation	3	
Max 'B' groups	1	

Recommended installation

Receiving hole size	30	mm
Retaining screws x 2	M5	
Retaining screw head	Pan head	

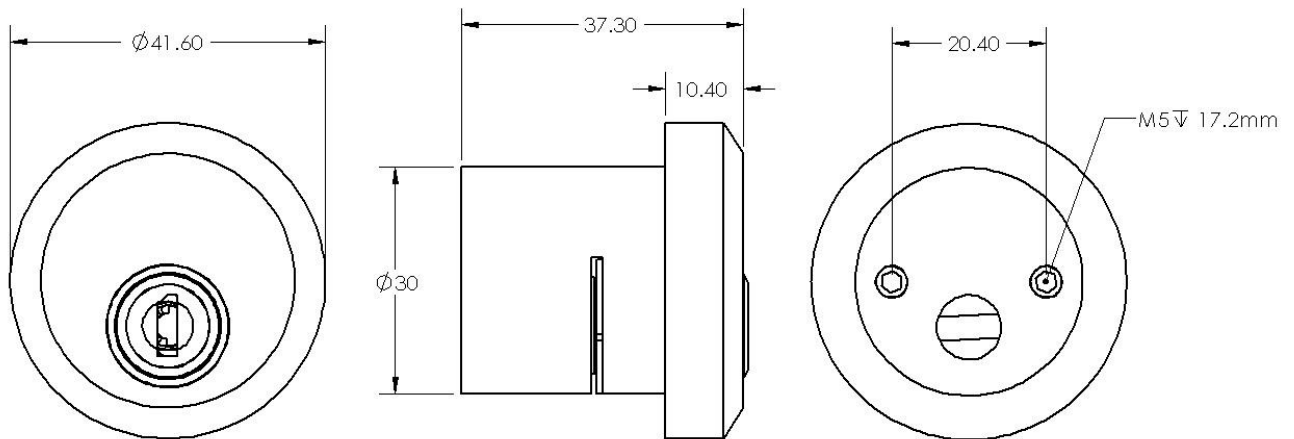


Figure 1: Lockset dimensions

Recommended Installation (New lock)

1. The material into which the lockset is to be secured should be at least 27mm thick.
2. Prepare receiving hole of diameter 30mm.
3. Place the lockset into the hole, align the backset with the rim cylinder.
4. Indicate on the material where the backset holes need to be drilled to be secured.
5. Pre-drill 4mm holes to receive the screw for the backset in the material.
6. Insert the lockset, place the securing plate into the bore, line up the tailbar with the backset and make sure the tail bar fully engages with the backset slot. Then align the securing holes of the lock with the holes in the securing plate.
7. Select suitable M5 pan head screws suitable for retaining the lockset in the securing plate. The screws should be as long as possible while ensuring they will not bottom out when fully tightened
8. Secure the backset using the retaining screws.

Recommended Installation (Replacement)

1. Remove original rim cylinder lockset
2. Place replacement rim cylinder into original bore
3. Align the tailbar with the backset slot
4. Once aligned and in place, secure the lockset using the retaining screws

Tailbar removal

1. Remove lockset from material
2. Insert allen key into securing screw holes until it engages with hexagonal headed grub screws
3. Loosen grub screws, once loosened, the two securing plates will need to be removed. Once removed the tail bar can be pushed through along with the stop collar and lock plug.

Note: Play close attention to small parts that come out the lock set once dismantled. Entire lockset needs to be dismantled to remove tail bar.